



**India Meteorological Department
(Ministry of Earth Sciences)**

BULLETIN NUMBER: 07 (BOB/06/2021)

TIME OF ISSUE: 1315 HOURS IST

DATED: 19.11.2021

FROM: INDIA METEOROLOGICAL DEPARTMENT (FAX NO. 24643965/24699216/24623220)

**TO: CONTROL ROOM, NDM, MINISTRY OF HOME AFFAIRS (FAX.NO. 23093750)
CONTROL ROOM NDMA (FAX.NO. 26701729)
CABINET SECRETARIAT (FAX.NO.23012284, 23018638)
PS TO HON'BLE MINISTER FOR S & T AND EARTH SCIENCES (FAX NO.23316745)
SECRETARY, MOES (FAX NO. 24629777)
H.Q. (INTEGRATED DEFENCE STAFF AND CDS) (FAX NO. 23005137/23005147)
DIRECTOR GENERAL, DOORDARSHAN (23385843)
DIRECTOR GENERAL, AIR (23421105, 23421219)
PIB MOES (FAX NO. 23389042)
UNI (FAX NO. 23355841)
D.G. NATIONAL DISASTER RESPONSE FORCE (NDRF) (FAX NO. 26105912, 2436 3260)
DIRECTOR, PUNCTUALITY, INDIAN RAILWAYS (FAX NO. 23388503)
CHIEF SECRETARY, ANDHRA PRADESH (FAX NO. 0863-2441029, 08645-246600)
CHIEF SECRETARY, TAMIL NADU (FAX NO 044-25672304)
CHIEF SECRETARY, PUDUCHERRY (FAX NO 0413-2334145)
CHIEF SECRETARY, KERALA (FAX NO 0471-2327176)
CHIEF SECRETARY, KARNATAKA (FAX NO 080-22258913)
CHIEF SECRETARY, MAHARASHTRA (FAX NO 022-22028594)
CHIEF SECRETARY, GUJARAT (FAX NO 079-23250305)
ADMINISTRATOR, DAMAN, DIU, DADRA & NAGAR HAVELI (FAX NO 0260-2230775)
CHIEF SECRETARY, GOA (FAX NO 0832-2415201)**

**Sub: a)Depression weakened into a well marked low pressure area over north interior Tamil Nadu and adjoining Karnataka and Rayalaseema &
b)Well marked low pressure area over East Central Arabian Sea**

a) Depression weakened into a well marked low pressure area over north interior Tamil Nadu and adjoining Karnataka and Rayalaseema

The Depression over north Tamil Nadu moved west-northwestwards and weakened into a well marked low pressure area over north interior Tamil Nadu and adjoining Karnataka and Rayalaseema at 1130 hrs IST of today, the 19th November 2021. It is very likely to continue to move west-northwestwards and weaken further gradually during next 24-hours.

(i) Rainfall (warning graphics enclosed)

19th Nov.: Light to moderate rainfall at most places with **heavy rainfall** at isolated places very likely over Rayalaseema, Coastal, south and north interior Karnataka, north interior Tamil Nadu south coastal Andhra Pradesh, Telangana and Kerala.

b) Well marked low pressure area over East Central Arabian Sea

The well marked low pressure area over Eastcentral Arabian Sea persisted over the same region at 1130 hours IST of today, the 19th November. It is likely to concentrate into a depression over the same area during next 24 hours. **As the system will move away from Indian coast, no adverse weather likely over Indian landmass.**

(i) Wind warning

- Squally wind speed reaching 40-50 kmph gusting to 60 kmph very likely over Eastcentral Arabian Sea on 19th and 20th and then decrease gradually thereafter.

(ii) Sea condition

- Sea condition will be rough to very rough over Eastcentral Arabian Sea on 19th and 20th and then improve gradually thereafter.

(iii) Fishermen Warning

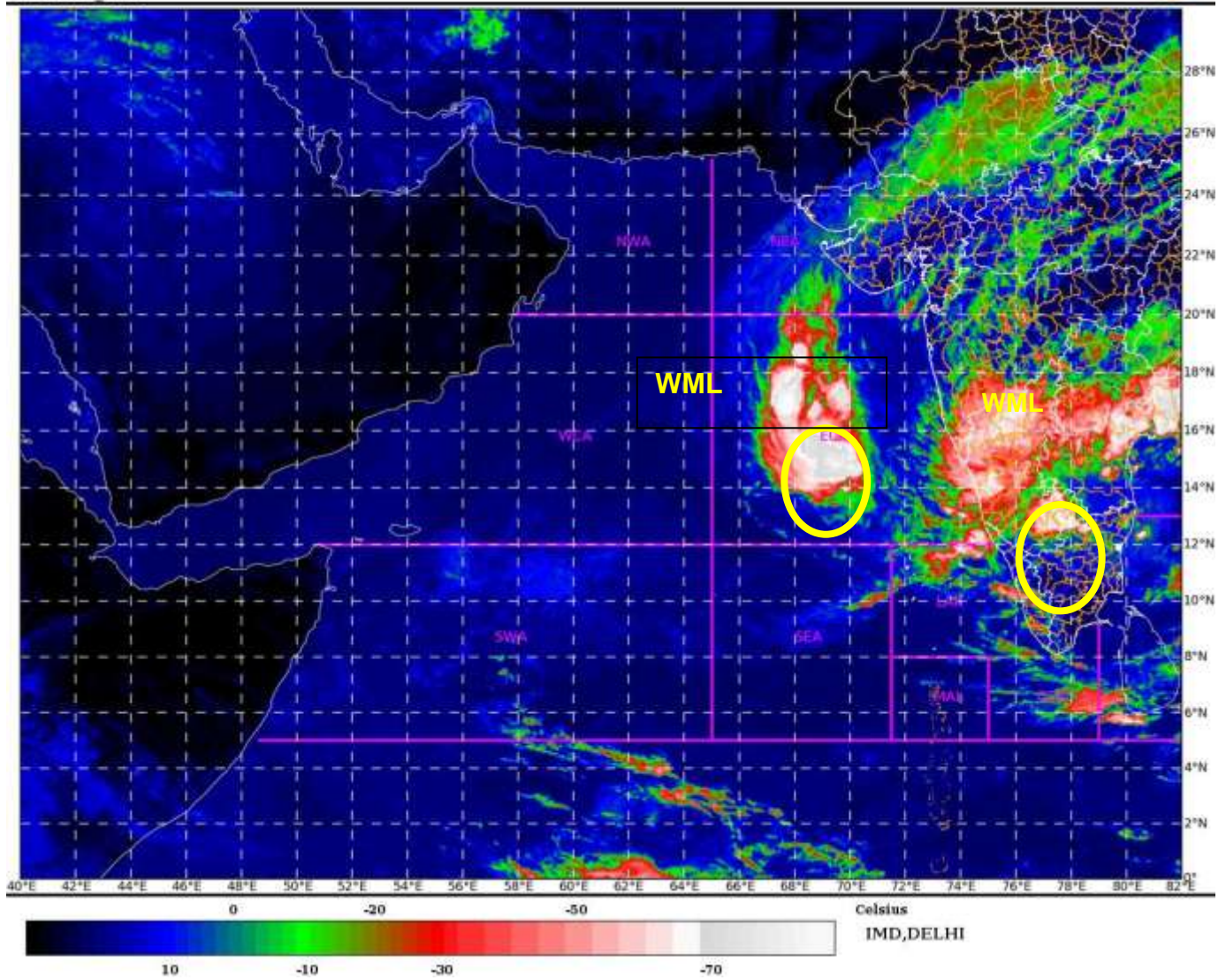
- Fishermen are advised not to venture into Eastcentral Arabian Sea on 19th and 20th .
(Graphics enclosed).

The Next Bulletin will be issued at 1130 IST of today, the 20th November 2021.

(DR RK JENAMANI)
Scientist-F, RSMC, New Delhi

*Copy to: ACWC Mumbai/ CWC Ahmedabadr/MC Goa/CWC Thiruvanathapuram.MC
Amarawati/CWC Visakhapatnam*

LEGEND: Heavy Rainfall: 64.5 to 115.5mm, **Very Heavy Rainfall:** 115.6 to 204.4mm **Most
Places:** more than 76% of total stations, **Isolated Places:** Less than 25% of total stations



WML:Well Marked Low pressure area



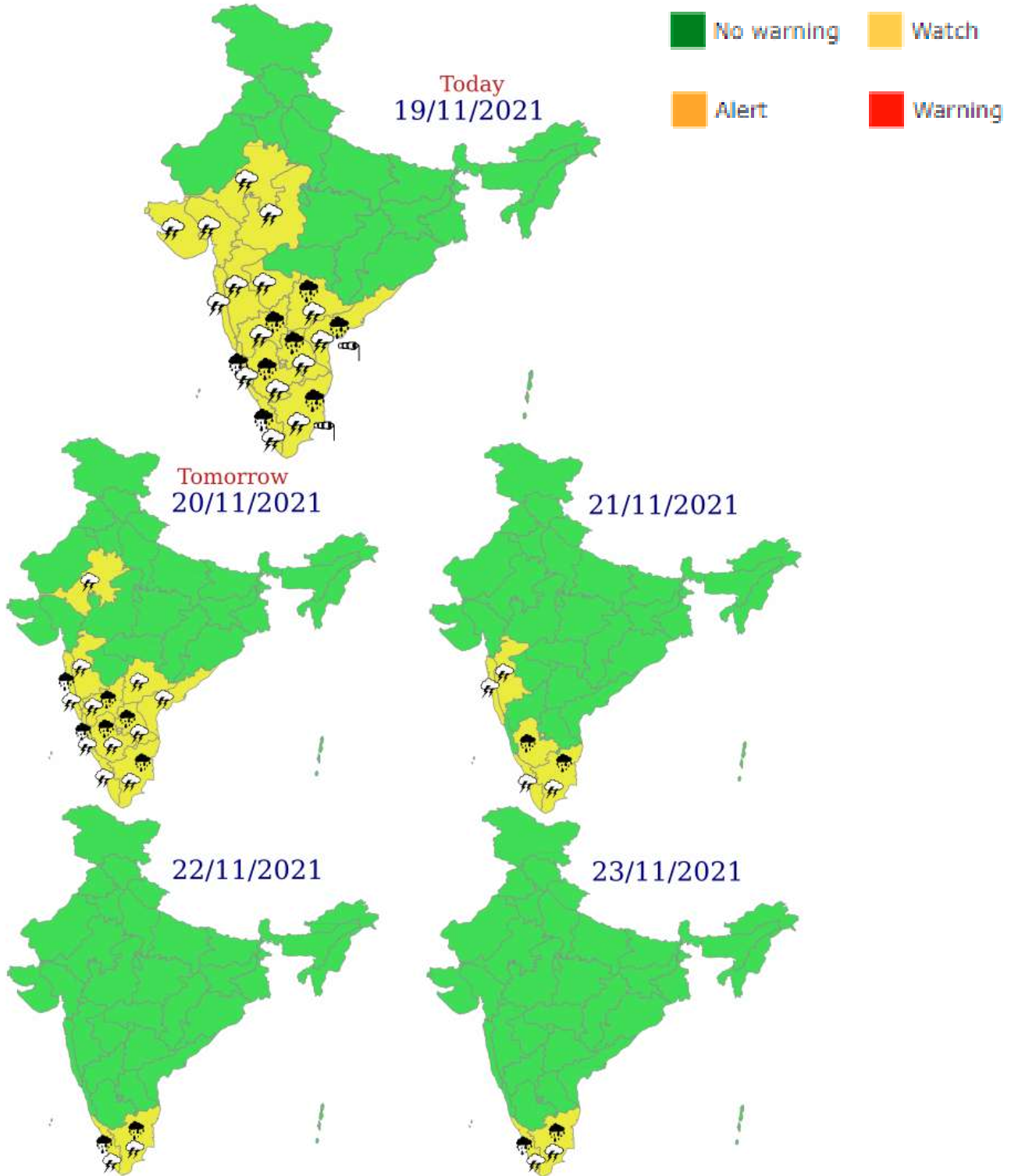
OBSERVED TRACK OF DEPRESSION OVER BAY OF BENGAL DURING (18th -19th NOVEMBER, 2021)



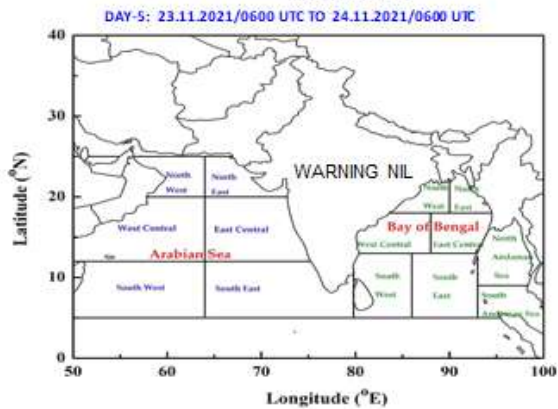
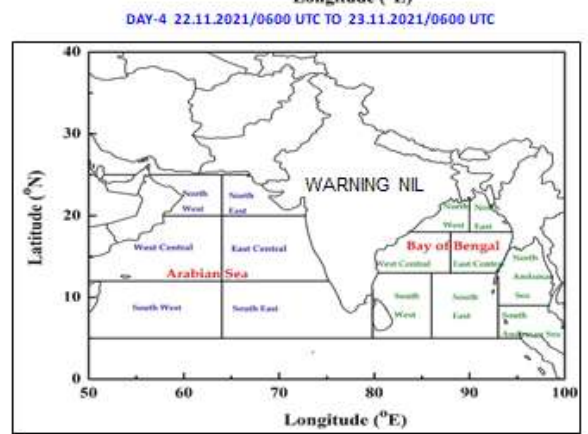
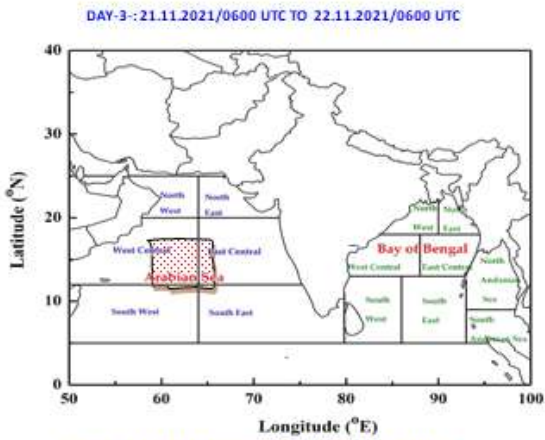
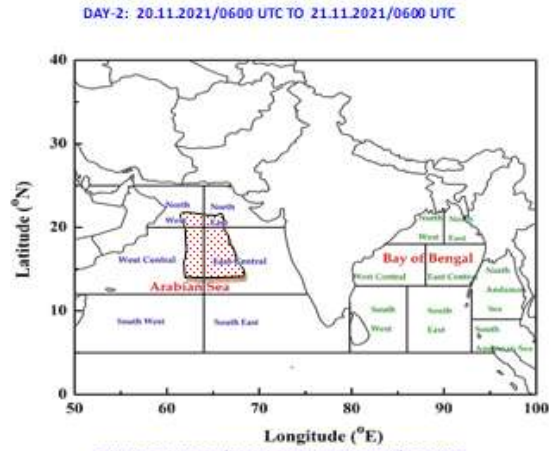
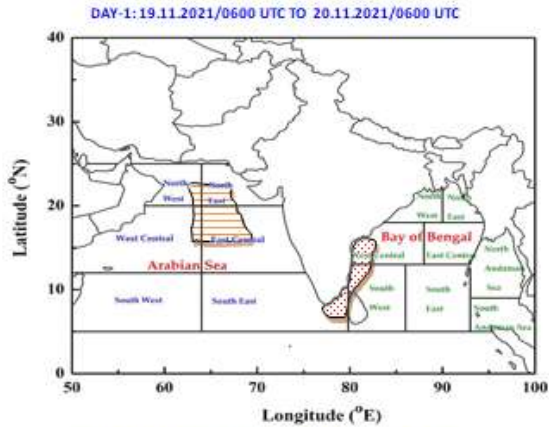
DATE/TIME IN UTC
IST=UTC + 0530
L: LOW PRESSURE AREA
WML: WELL MARKED LOW PRESSURE AREA
D: DEPRESSION (17-27 KT)
DD: DEEP DEPRESSION (28-33 KT)
CS: CYCLONIC STORM (34-47 KT)
SCS: SEVERE CYCLONIC STORM (48-63KT)
VSCS: VERY SEVERE CYCLONIC STORM (64-89 KT)
ESCS: EXTREMELY SEVERE CYCLONIC STORM (90-119 KT)
SuCS: SUPER CYCLONIC STORM (\geq 120 KT)

- LESS THAN 34 KT
- 34-47 KT
- \geq 48 KT
- OBSERVED TRACK
- FORECAST TRACK
- CONE OF UNCERTAINTY

Meteorological Sub-division level heavy rainfall warning



INDIA METEOROLOGICAL DEPARTMENT
FISHERMAN WARNING FOR BAY OF BENGAL AND ARABIAN SEA



AREA UNDER FISHERMEN WARNING

- 40-50 KMPH GUSTING TO 60 KMPH (SQUALLY WEATHER)
- 45-55 KMPH GUSTING TO 60 KMPH (SQUALLY WEATHER)
- 55-65 KMPH GUSTING TO 70 KMPH (STRONG WIND)